

## Flanged Washers

Steel, for Toggle Clamps

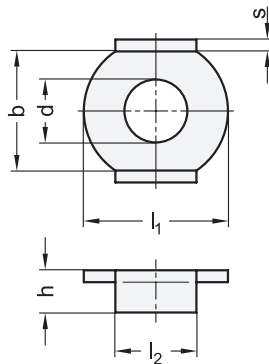
### SPECIFICATION

Steel **ST**

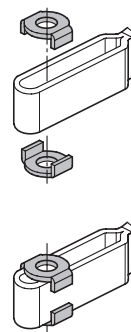
Zinc plated, blue passivated

### INFORMATION

Flanged washers GN 898.1 are used to attach and position pressure elements on toggle clamps with open clamping arm. The corresponding toggle clamps are listed in the table.



### Assembly instruction



Toggle, power and hook clamps 14

### GN 898.1

Description	d Nominal size	d Actual dimension	b	h	l <sub>1</sub>	l <sub>2</sub>	s	For toggle clamps GN 810.10 GN 810.11	
GN 898.1-6-ST	6	6.5	12.5	4.5	13.5	8.5	1.5	220	4
GN 898.1-10-ST	10	10.5	20.5	6.9	22	14	2	440	8